

OPTIONS - Customize your swager

STANDARD SWAGER

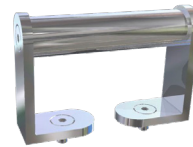
The standard swager is delivered without any additional accessories. The swager has a built-in grip and two mounting holes on both top and bottom. This means it can be fixed on a table, in one of the two upright positions. It can also be operated in a horizontal position. The standard swager is customized to operate two different sizes of dies. In addition it has two hydraulic connections depending on the wanted operational position.

Art. No: P 0040T 1P



HANDLE

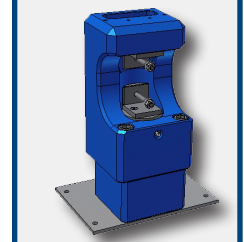
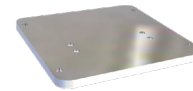
The swager can be delivered with a handle for easy transportation of the swager. When using the swager in an upright position without fixating the swager, it is recommended to use it together with the stabilizing plate.



Art. No: 40T HANDLE

STABILIZING PLATE

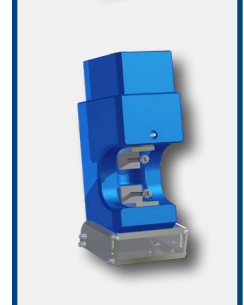
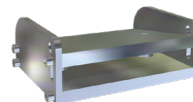
We highly recommend to use the stabilizing plate when operating the swager without fixation. The stabilizing plate can be combined with the adjustable stand or together with the handle.



Art. No: 40T STAB PLATE

ADJUSTABLE STAND

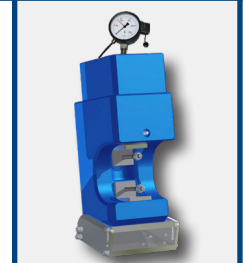
To get an easier and more ergonomical position when operating the swager it is recommended to use the adjustable stand. It is especially well suited for operating the swager upside down, which means you can keep your hands in a fixed position during the operation. The stand can be fastened on a table or used together with the stabilizing plate.



Art. No: 40T ADJ STAND

MA 800 - OPTIONAL PRESSURE GAUGE

This optional pressure gauge shows the pressure during swaging and breaks the swaging sequence once the preset pressure is reached, and open the dies. MA 800 displays the value in bar.



Art No: MA 800

DIE HOLDER

Add the spring loaded fastening nut A2 ECC to convert the die holder into a system suitable for swaging flemish eye sleeves and terminals. A2 ECC will make the dies float.



Art. No: A2 ECC