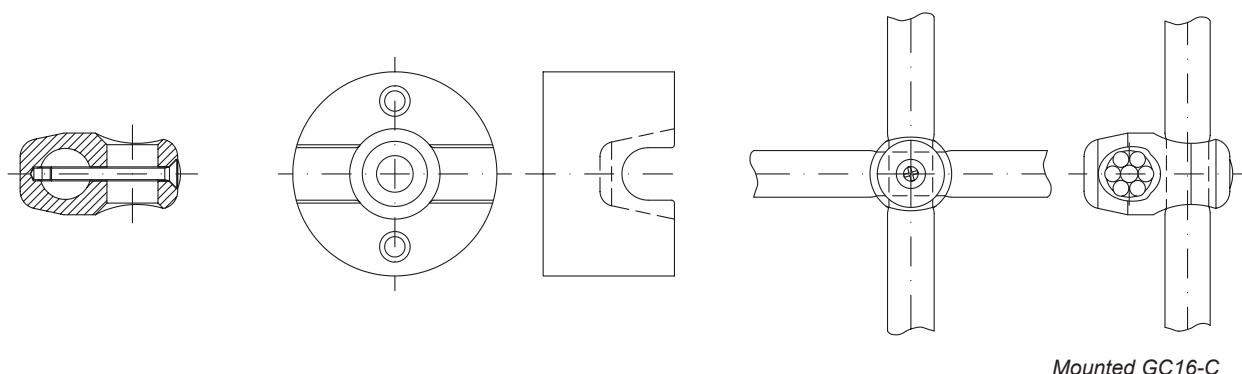


# TALURIT™ COMBI SYSTEM

## GC16-C

TALURIT™ COMBI is a system of ferrules to be used together with a TALURIT™ COMBI combination rope. The system of ferrules and combination rope offers many possibilities of applications and can be used together with many different kinds of products for securing. It facilitates various kinds of anchoring as well as joining ropes. Examples of applications are protection nets, playground items, stage equipment and items in the field of sports and leisure.

The material of the ferrules is a special aluminium alloy that is non-corroding. It is excellent for cold forming and in spite of its low weight it allows to reach highest possible safety. The system is designed for the TALURIT™ COMBI combination ropes, while combination ropes of other construction and/or brand has to undergo test before use to ensure that required load is achieved.



GC16-C is a patented solution to make cross-joints on combination ropes. With specially designed press dies and a special TALURIT™ swager it is possible to press this very slim cross fixation and achieve a very strong clamping. Before pressing the ropes are fixed with a screw, which after pressing is non-detachable. On the GC16-R combination rope it is possible to reach as much as 10 kN breaking load in all directions and approximately 25 kN in the ferrule direction. The special dies give a very smooth surface and grinding is not required after pressing.

Product No.	Type	Press die	Required swaging force approx.
GC16-C	Cross joint	FPM GC16-C UB-10T/GC16-C	70 kN*
GC16-R	TALURIT™ COMBI combination rope 16 mm	-	-
GC-SCREW-4.8x50	SCREW KFXS 4.8 x 50		

\* Figures based on TALURIT™ COMBI combination ropes GCXX-RMU and GCXX-RSP.